



GAT MONTHLY MEMBERSHIP PROGRESS REPORT

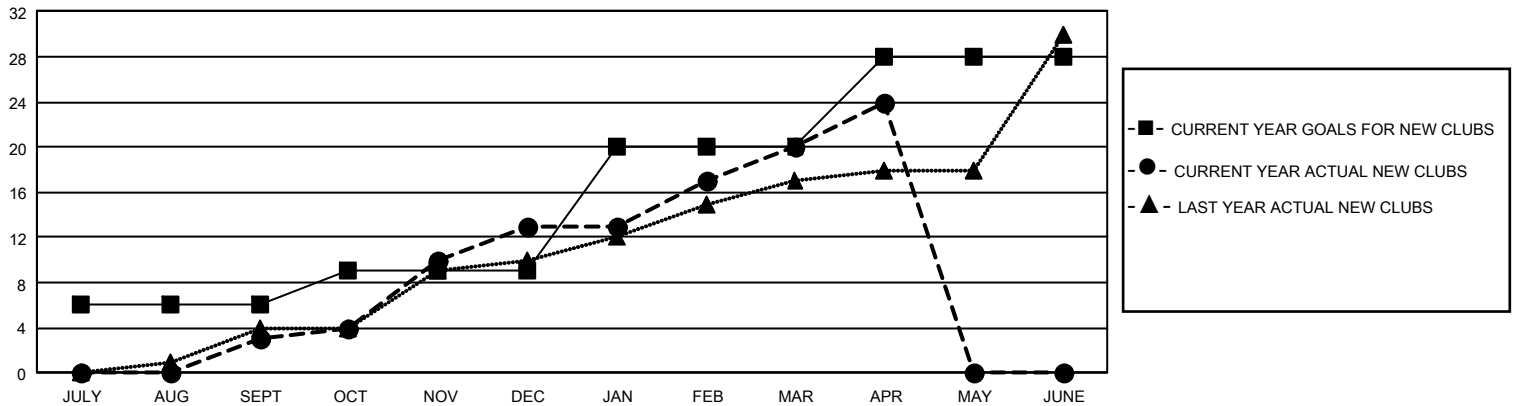
Results as of: 4/30/2025

GMT Constitutional Area 3, Group D

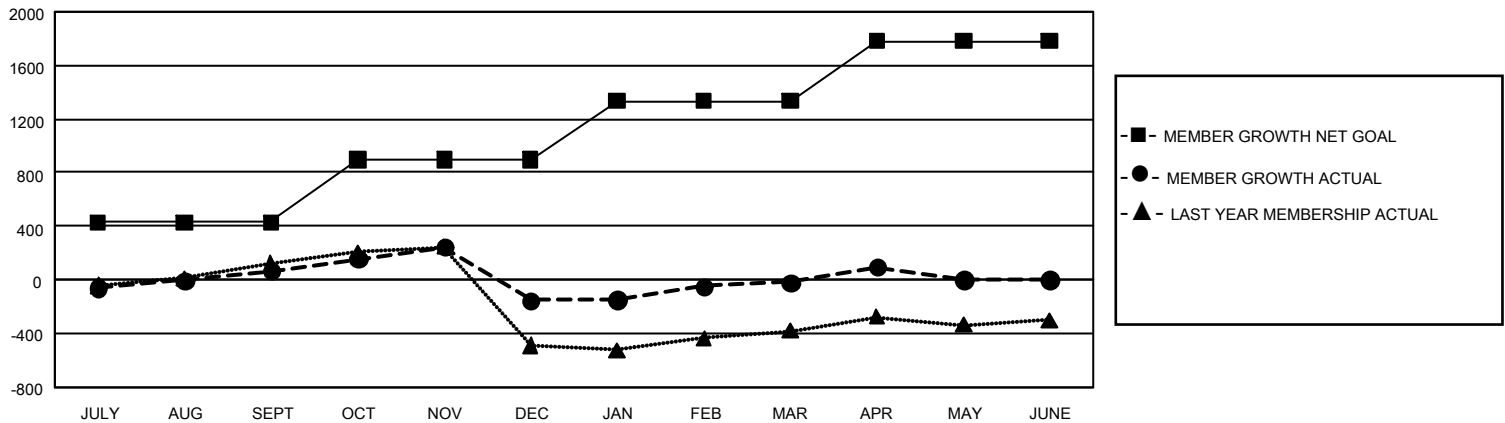
REPORT DOES NOT INCLUDE CLUBS IN UNDISTRICTED AREAS.

| Clubs | | | | Members | | | |
|-----------------------|---------------|-----------|---------------|-----------------------|------------------------|----------------------|--|
| RESULTS FOR 2024-2025 | | | | RESULTS FOR 2024-2025 | | | |
| QUARTER | NEW CLUB GOAL | NEW CLUBS | DROPPED CLUBS | QUARTER | MEMBER GROWTH NET GOAL | MEMBER GROWTH ACTUAL | DROPPED MEMBERS ACTUAL (including transfers) |
| JULY/AUG/SEPT | 18 | 3 | 10 | JULY/AUG/SEPT | 429 | 645 | 452 |
| OCT/NOV/DEC | 9 | 10 | 12 | OCT/NOV/DEC | 469 | 1,010 | 1,133 |
| JAN/FEB/MAR | 33 | 7 | 5 | JAN/FEB/MAR | 437 | 548 | 333 |
| APR/MAY/JUNE | 24 | 4 | 0 | APR/MAY/JUNE | 445 | 253 | 108 |

GOALS AND ACTUAL NEW CLUBS CUMULATIVE



GOALS AND ACTUAL MEMBERS CUMULATIVE



DROPPED CLUBS: 26

454 CLUBS OF 791 ADDED 1 OR MORE NEW MEMBERS

GENDER DISTRIBUTION

| | |
|----------------------|----------------|
| MALE | 6,951 (45.09%) |
| FEMALE | 8,463 (54.90%) |
| NON BINARY | 1 (0.01%) |
| PREFER NOT TO ANSWER | 1 (0.01%) |

DROPPED MEMBERS

| | |
|----------------|--------------|
| DECEASED | 84 |
| CLUB CANCELLED | 335 |
| OTHER | 1,587 |
| TOTAL | 2,006 |

[CLICK HERE FOR CUMULATIVE MEMBERSHIP DATA](#)

TOTAL FAMILY UNIT MEMBERS 0

FAMILY MEMBERS PAYING HALF DUES 0